



REGIONAL SPECIALISED METEOROLOGICAL CENTRE -TROPICAL CYCLONES, NEW DELHI TROPICAL WEATHER OUTLOOK

DEMS-RSMC TROPICAL CYCLONES NEW DELHI DATED 19.08.2025

SPECIAL TROPICAL WEATHER OUTLOOK FOR THE NORTH INDIAN OCEAN (THE BAY OF BENGAL AND THE ARABIAN SEA) VALID FOR THE NEXT 168 HOURS ISSUED AT 0700 UTC OF 19.08.2025 BASED ON 0300 UTC OF 19.08.2025.

Sub: Depression over south interior Odisha

The Depression over south coastal Odisha moved west-northwestwards with a speed of 11 kmph during past 6 hours and lay centred at 0300 UTC of today, the 19th August over south interior Odisha, near latitude 19.8°N and longitude 84.0°E, about 50 km north-northwest of Daringabadi (Odisha, 43046), 90 km east of Bhawanipatna (Odisha, 43042) and 90 km southeast of Titlagarh (Odisha, 42961).

It is likely to continue to move west-northwestwards across south Odisha and south Chhattisgarh and weaken into a well-marked low pressure area during next 12 hours.

Associated maximum sustained wind speed is 20 kt gusting to 30 kt and the estimated central pressure is 997 hPa. Sea condition is rough over westcentral & adjoining northwest & southwest BoB.

Angul (42969) reported lowest mean sea level pressure (MSLP) of 997.4 hPa, pressure change in past 24 hours (P24) as -3.6 hPa, and maximum sustained wind speed (MSW) of 50⁰/ 02 kt. Puri (43053) reported MSLP of 999.8 hPa and MSW of 180⁰/ 04 kt. Bhawanipatna (43042) reported MSLP of 999.1 hPa, P24 as -1.9 hPa.

The cloud mass is sheared to the southwest of system centre. As per INSAT 3D imagery at 0300 UTC, the vortex lay over South coastal Odisha and neighbourhood. Centre is poorly defined. Associated scattered to broken low and medium clouds with embedded intense to very intense convection lay over South Gangetic West Bengal, South Chhattisgarh, South coastal Odisha, Vidarbha, Telangana, northwest & westcentral Bay of Bengal. Minimum cloud top temperature (CTT) is minus 70 to 90 °C. moderate to intense convection lay over Odisha and north coastal Andhra Pradesh (Minimum CTT is minus 50 to 70 °C).

ACTION SUGGESTED FOR FISHERMEN:

Fishermen are advised not to venture into south, central & adjoining northwest Bay of Bengal and along & off Andhra Pradesh-Odisha-West Bengal-Bangladesh coasts on 19th August.

REMARKS: Madden Julian Oscillation (MJO) is likely to be in phase 4 with amplitude more than 1 during next 3 days favouring increase in convective clouds. As per guidance from CIMSS, the low level vorticity is about 60-70 X 10⁻⁶ s⁻¹ over westcentral BoB and another zone of positive vorticity about 60-70 X 10⁻⁶ s⁻¹ is seen over Chhattisgarh (to the west of system centre). The positive vorticity zones are extending upto 500 hPa level. The low level convergence is around 15 X 10⁻⁶ s⁻¹ to the southwest of system centre. The upper level divergence is around 20X 10⁻⁶ s⁻¹ to the southwest of system centre and another zone to the southeast of system centre. Mid-level vertical wind shear (VWS) of horizontal wind is moderate to high 15-25 kt over system area and along the forecast path.

Under these features the depression over south interior Odisha coast is likely to move west-northwestwards across south Odisha and south Chhattisgarh and weaken into a well-marked low pressure area during next 12 hours.

(M. Sharma)
Scientist-E, RSMC New Delhi

Cloud distribution: (a) Isolated: <25%, Scattered:25-50%, Broken: 51-75%, Solid:>75%, Convection Intensity: (a) Weak: Cloud Top Temperature(CTT)>-25°C,(b)Moderate:CTT:-25°Cto-40°C,(c)Intense:CTT: -41°Cto -70°Cand(d)Very Intense::Less than -70°C
PROBABILITYOFCYCLOGENESIS(FORMATIONOFDEPRESSION):NIL:0%,LOW:1-33%,MODERATE:34-66%ANDHIGH:67-100%
ThisisaguidanceBulletinforWMO/ESCAPPanelMembercountries.VisitrespectiveNationalwebsitesforCountryspecificBulletins

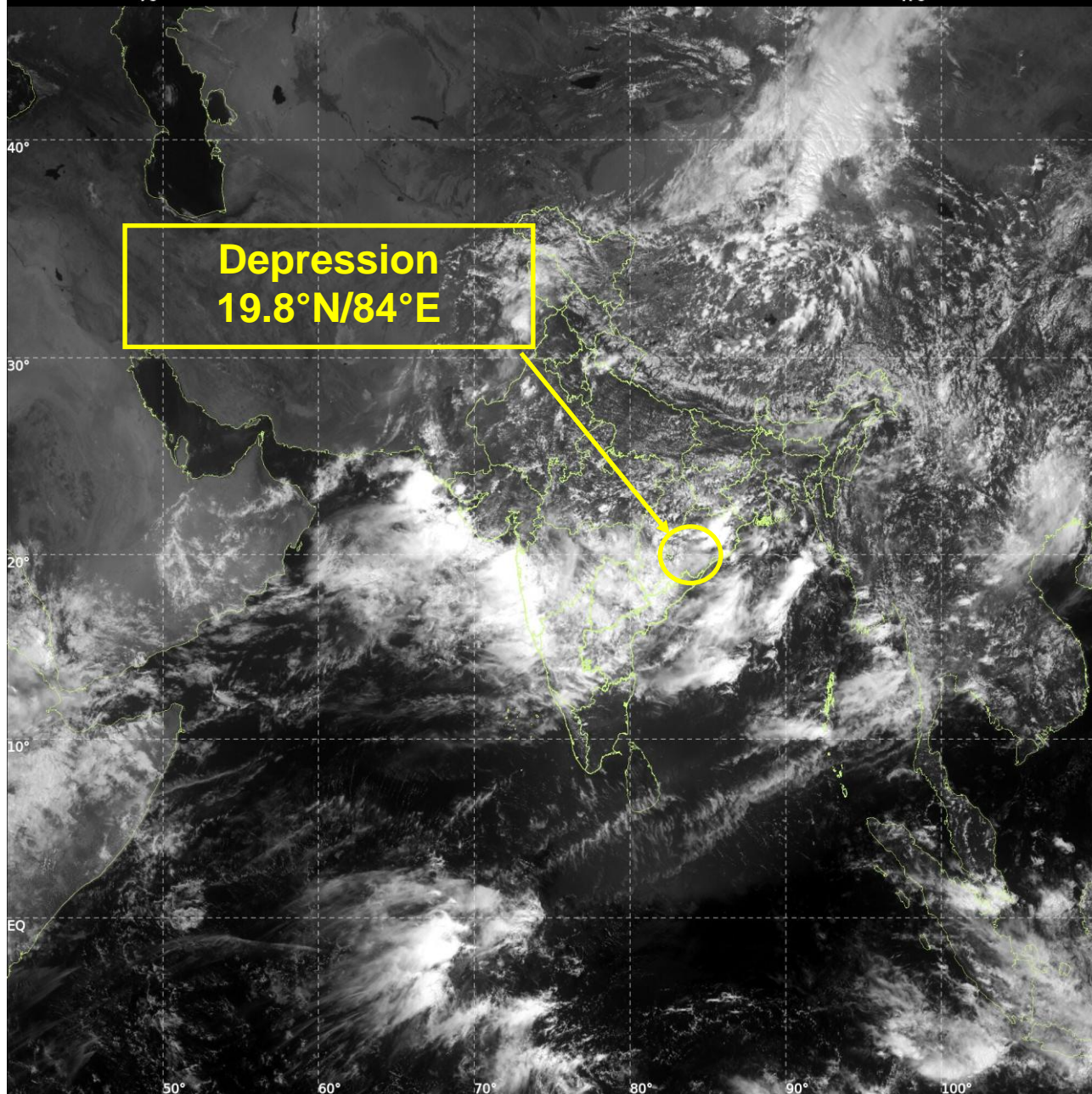


INSAT-3DS IMG, Visible Count @ 0.65 μm
GMT:19-08-2025/(0630-0657) IST:19-08-2025/(1200-1227)
L1C MERCATOR (LINEAR STRETCH: 0.5%)

70

476

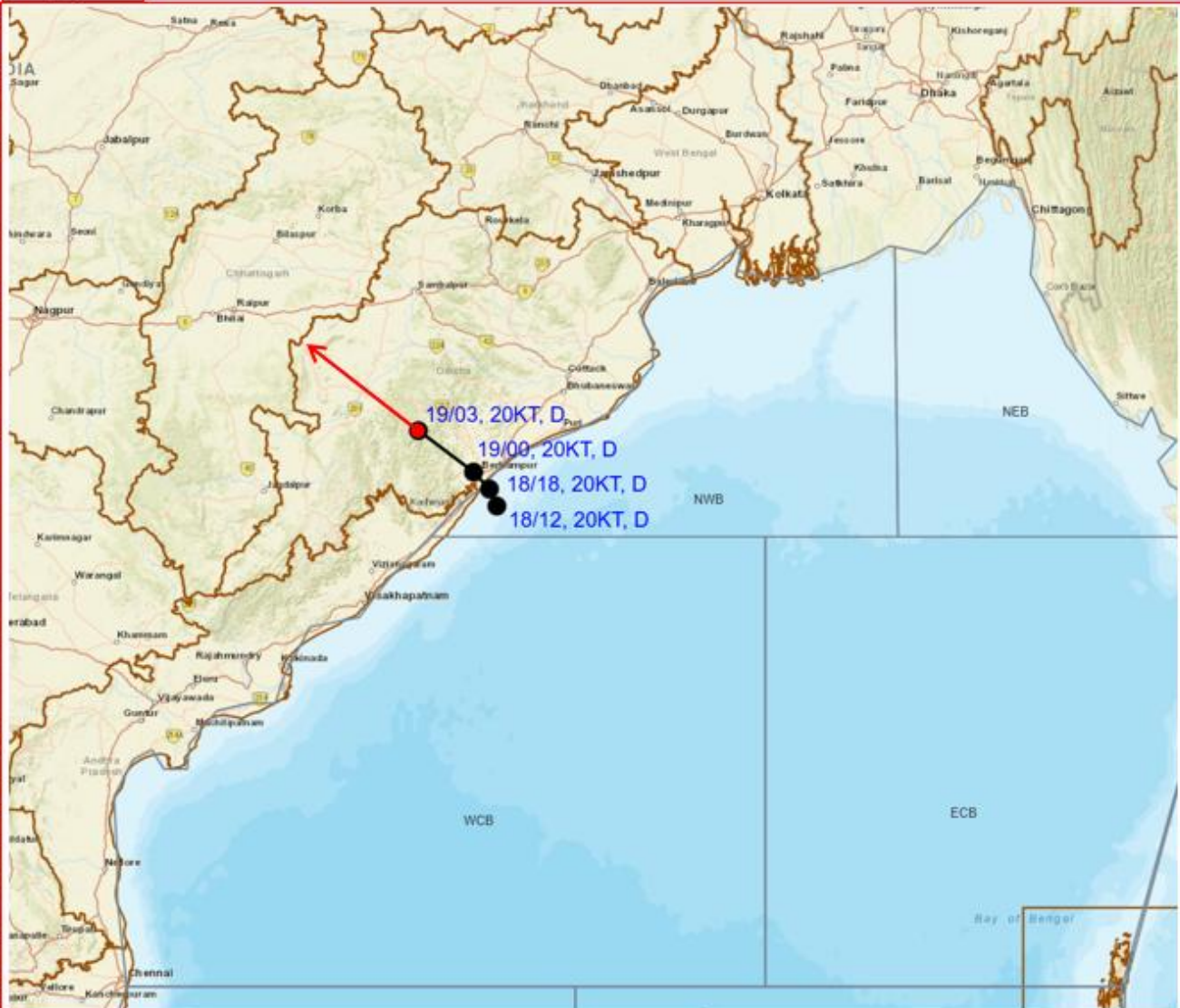
Depression
19.8°N/84°E



Cloud distribution: (a) Isolated: <25%, Scattered:25-50%, Broken: 51-75%, Solid:>75%, Convection Intensity: (a) Weak: Cloud Top Temperature(CTT)>-25°C,(b)Moderate:CTT:-25°Cto-40°C,(c)Intense:CTT: -41°Cto -70°Cand(d)Very Intense::Less than -70°C
PROBABILITYOFCYCLOGENESIS(FORMATIONOFDEPRESSION):NIL:0%,LOW:1-33%,MODERATE:34-66%ANDHIGH:67-100%
ThisisaguidanceBulletinforWMO/ESCAPPanelMembercountries.VisitrespectiveNationalwebsitesforCountryspecificBulletins



**OBSERVED AND FORECAST TRACK OF DEPRESSION OVER SOUTH INTERIOR ODISHA AT
0830 HRS. IST (0300 UTC) OF 19th AUGUST 2025**



DATE/TIME IN UTC

IST=UTC + 0530

L: LOW PRESSURE AREA

WML: WELL MARKED LOW PRESSURE AREA

D: DEPRESSION (17-27 KT)

DD: DEEP DEPRESSION (28-33 KT)

CS: CYCLONIC STORM (34-47 KT)

SCS: SEVERE CYCLONIC STORM (48-63KT)

VSCS: VERY SEVERE CYCLONIC STORM (64-89 KT)

ESCS: EXTREMELY SEVERE CYCLONIC STORM (90-119 KT)

SuCS: SUPER CYCLONIC STORM (≥ 120 KT)



LESS THAN 34 KT



34.47 KT



≥ 48 KT



OBSERVED TRACK



FORECAST TRACK



CONE OF UNCERTAINTY

Fishermen Warning Graphics

